

# Energy- Intensive- Industries

---

CHALLENGES AND  
SOLUTIONS FOR A  
SUSTAINABLE  
TOMORROW



encoding

# → WHAT ARE ENERGY INTENSIVE INDUSTRIES (EIIs)?

EIIs are industrial sectors that **use a lot of energy** in their production processes.

Examples:



Steel manufacturing



Cement



Glass



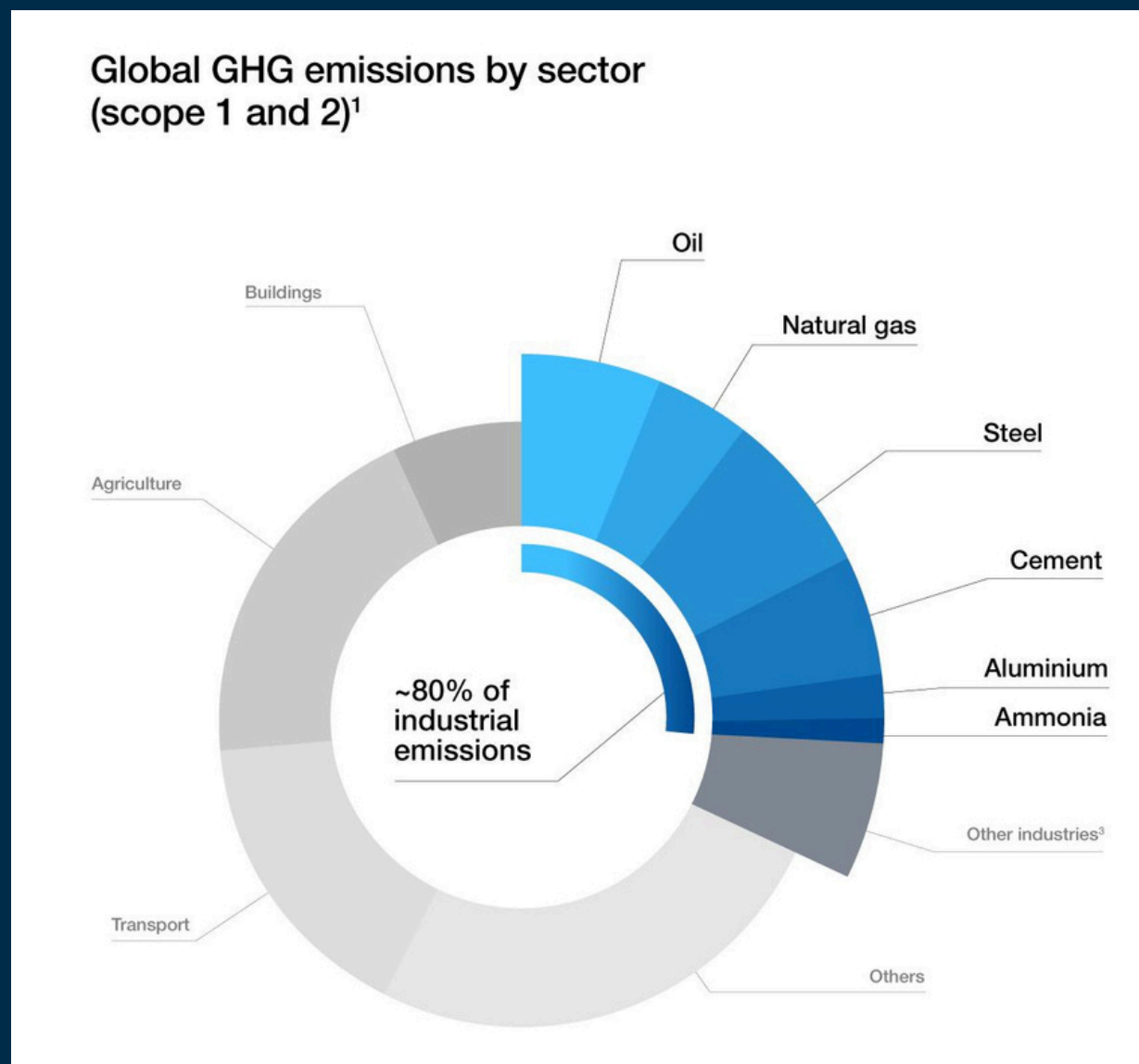
Chemicals



# → WHY ARE THEY CRUCIAL?

EIs produce **essential** materials for infrastructure and industry.

However, their high energy demand also makes them **key players in the transition** to a sustainable energy future.



# → EII's CHALLENGES



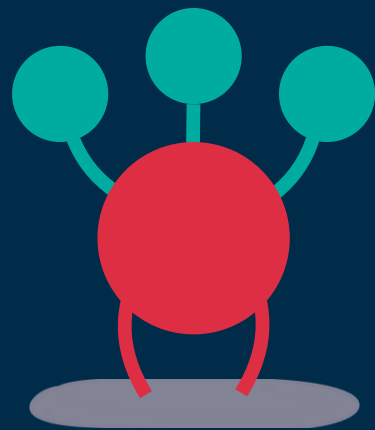
# → HOW TO GET ON TOP OF THESE CHALLENGES?

Putting **RSFs** together with **Digital Twins** is helping EUs **cut** their **carbon footprint** and work more efficiently.

## RSF

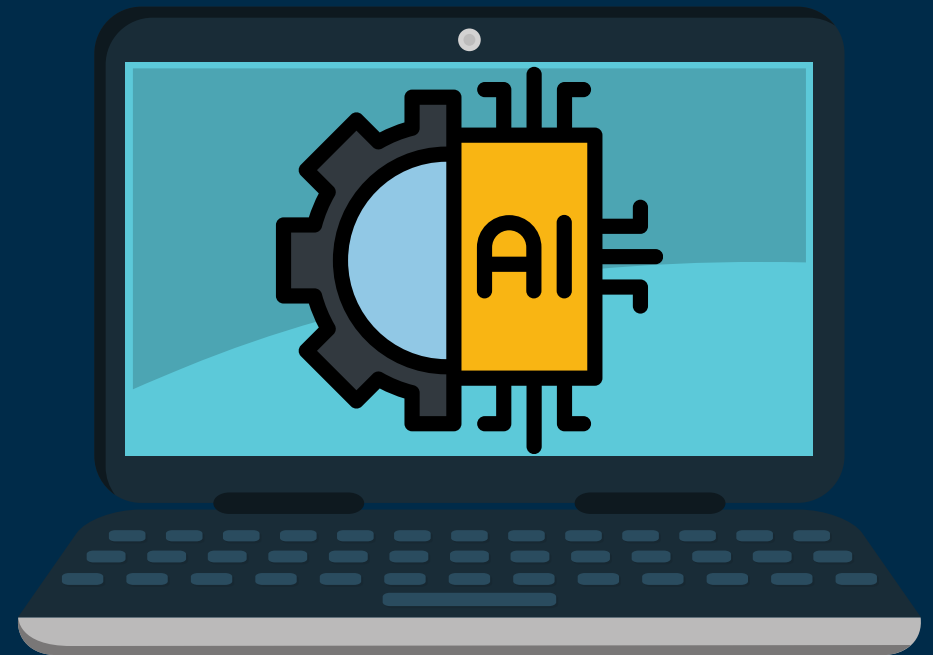


Green  
Hydrogen



Ammonia

## DIGITAL TOOLS



Digital Twins, ML Algorithms





**THE FUTURE OF EIIs LIES IN  
DIGITALIZATION, ENERGY EFFICIENCY,  
AND THE ADOPTION OF CLEAN  
TECHNOLOGIES.**

Advances in **RSF** and **Digital Twins** will  
be critical to achieving a more  
sustainable industry.



**encoding**

**will be part of the change.**



WANT TO **KNOW MORE**  
ABOUT HOW **ENCODING** IS  
LEADING THIS CHANGE?

**Follow us and visit our  
website to find out!**

**<https://encoding.ulb.be/>**



**encoding**