

Energy- Intensive- Industries

CHALLENGES AND
SOLUTIONS FOR A
SUSTAINABLE
TOMORROW



encoding

→ WHAT ARE ENERGY INTENSIVE INDUSTRIES (EIIs)?

EIIs are industrial sectors that **use a lot of energy** in their production processes.

Examples:



Steel manufacturing



Cement



Glass



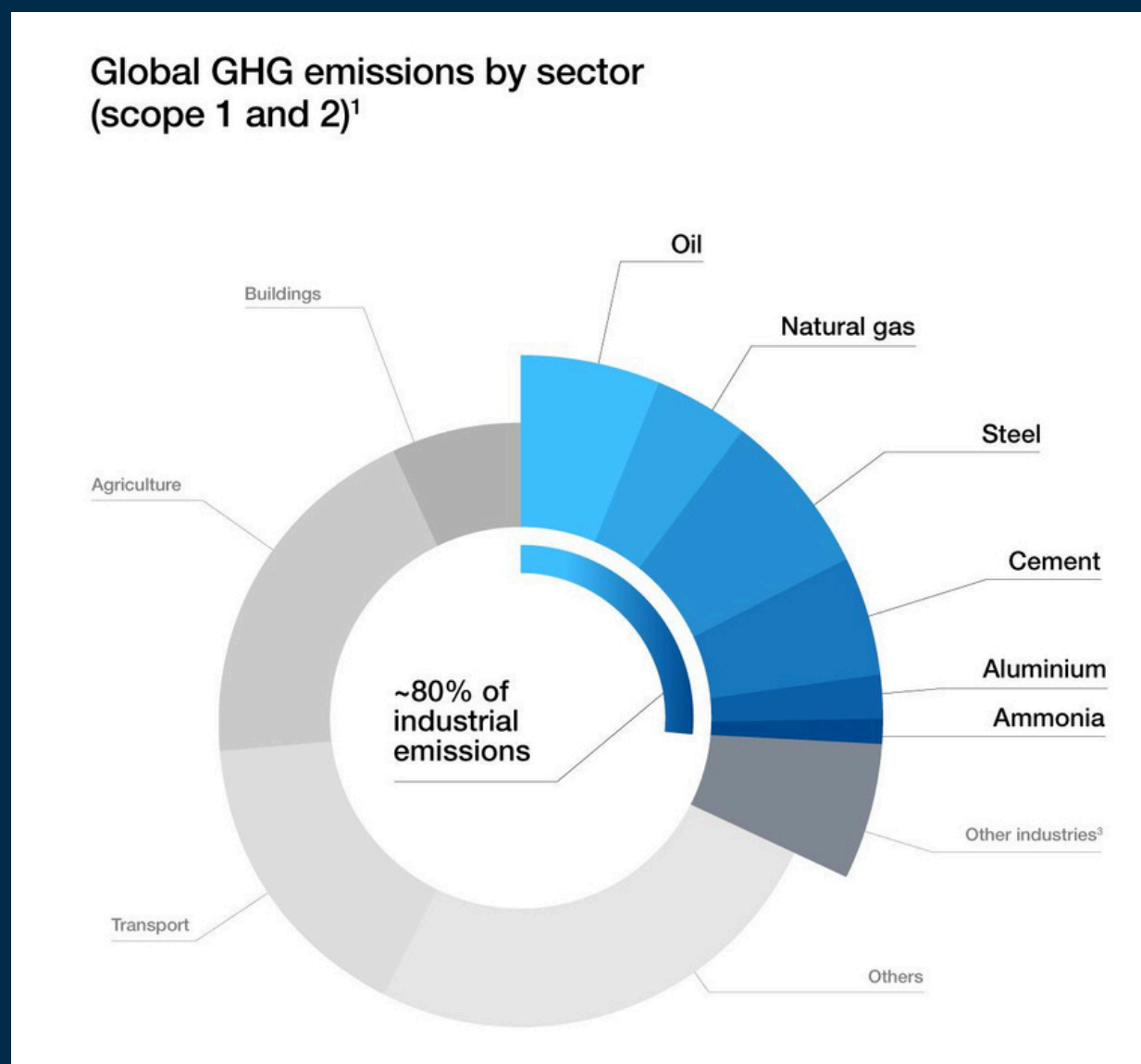
Chemicals



→ WHY ARE THEY CRUCIAL?

Ells produce **essential** materials for infrastructure and industry.

However, their high energy demand also makes them **key players in the transition** to a sustainable energy future.



Source: UNITED NATIONS FRAMEWORK CONVENTION ON CLIMATE CHANGE

→ EII's CHALLENGES



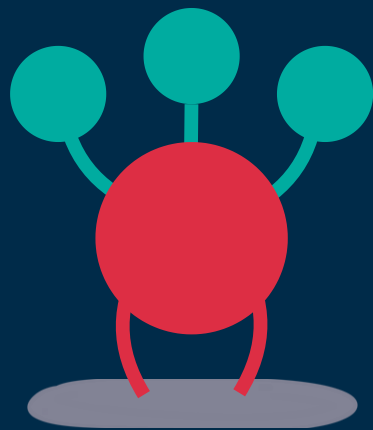
→ HOW TO GET ON TOP OF THESE CHALLENGES?

Putting **RSFs** together with **Digital Twins** is helping EUs **cut** their **carbon footprint** and work more efficiently.

RSF

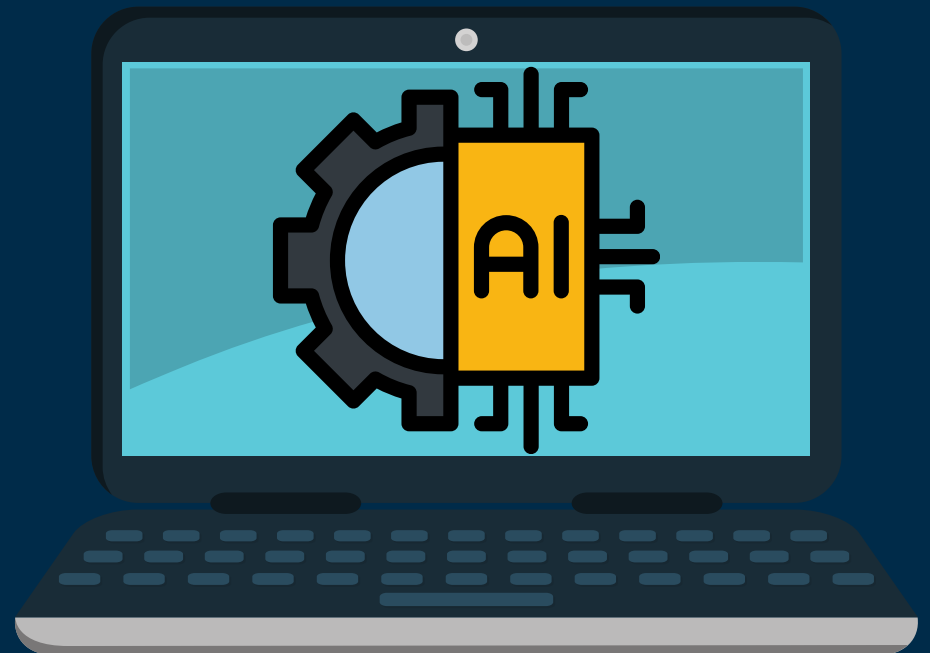


Green
Hydrogen



Ammonia

DIGITAL TOOLS



Digital Twins, ML Algorithms



→ **THE FUTURE OF EIIs LIES IN
DIGITALIZATION, ENERGY EFFICIENCY,
AND THE ADOPTION OF CLEAN
TECHNOLOGIES.**

Advances in **RSF** and **Digital Twins** will
be critical to achieving a more
sustainable industry.



encoding

will be part of the change.





WANT TO **KNOW**
MORE ABOUT HOW
ENCODING IS LEADING
THIS CHANGE?

**Follow us and visit our
website to find out!**

<https://encoding.ulb.be/>



encoding

This ENCODING project has received funding from the European Union's Horizon Europe research and innovation programme under the Marie Skłodowska-Curie grant agreement No 101072779.